

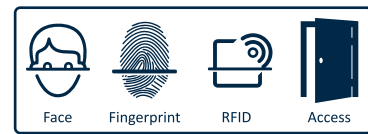


**NAVKAAR
ENTERPRISE**

Powered By eSSL

Multi-Biometric Time Attendance & Access Control System

eFace-990



Specification

Standard

Fingerprints: 10,000(1:N)
Faces: 6,000(1:N) 10,000(1:1)
Cards: 10,000
Transactions: 1,000,000
Push Data: Yes

Optional

Fingerprints: 50,000(1:N)
Faces: 3,000(1:N) 30,000(1:1)
Cards: 50,000
Transactions: 1,000,000

Hardware

1.2GHz CPU
Memory 1GB RAM / 1GB Flash
SilkID Fingerprint Sensor
4.3 Inches Touch Screen
Hi-Fi Voice & Indicator
Tamper Switch Alarm

Standard Functions

ID Card / Work Code
DST / SMS / Bell Schedule
Attendance Status Auto-Switch
Record Query / Photo ID

Special Functions

Multiple Biometric Verification Modes
Alive Finger Detection
Duplicate Face Detection

Optional Functions

HID Proxy / Mifare Card Reader
Wi-Fi / 3G External Printer
Battery (2,000 mAh)
POE (Standard IEEE 802.3at)

Communication

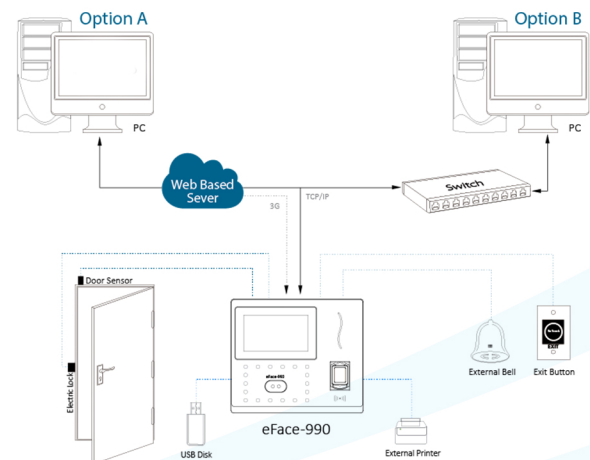
TCP / IP / USB Host / Wiegand Output

Access Control Interface

Lock Relay Output / Alarm Output /
Exit Button / Door Sensor / External Bell

Power

Operating Voltage 12V DC
Current Draw < 500 mA



Disclaimer: Brief specifications are mentioned here. Specifications may change without prior notice. Customers are advised to check with us before purchase.

Actual product may differ slightly to that depicted for ongoing product development

www.esslsecurity.com

ISO FC CE RoHS