



N-BM260W Pro Intermediate Multi Bio



Face



Finger



RFID



Battery
(Optional)



WiFi



LAN



USB

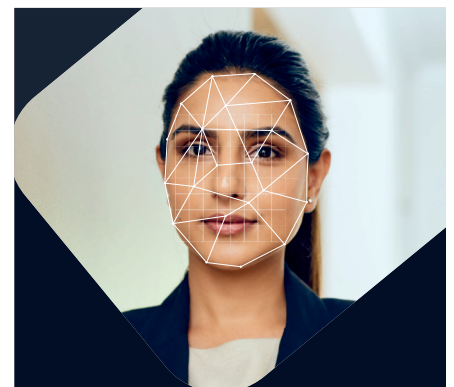


Access
Control

Multi-Bio Attendance and Access Control

Storage Capacity

| | |
|-----------------|----------|
| Face Capacity | 1200 |
| Finger Capacity | 3000 |
| Card Capacity | 2000 |
| Max User | 2000 |
| Log Capacity | 1,50,000 |



N-BM260W Pro

"N-BM260W Pro hands out reliable performance leading to customer satisfaction with its user friendly interface."

Features

High-Speed and Accurate Face Identification

Good adaptation for dry, moist and rough fingerprints.

Output relay for door open.

Face, Fingerprint, Card, Password authentication.

Supremely low Electric energy consumption.

Highly reliable and durable.

Comprehensive SDK is available for development and integration.

N-BM260W Pro

Communication Interface

| | |
|---------------|--------------------|
| Communication | TCP/IP, Wi-Fi, USB |
|---------------|--------------------|

Biometric

| | |
|-------------------|-------------------------------|
| Push Data | Yes |
| Sensor type | 500 DPI |
| FAR | 0.01% |
| FRR | 0.001% |
| OS | Linux |
| Verification time | <=1 second |
| RF card options | Proximity / Mifare (Optional) |

Audio/Visual

| | |
|-------------------|---------------------------------------|
| Display | 2.8" TFT LCD color screen |
| Voice instruction | 16-bit Hi-Fi voice & sound indication |
| Language | English |

Access control

| | |
|--------------------|-------------------------------|
| Wiegand | Input / Output |
| Relay | Yes |
| Support | KR26E |
| | Remote, Push Button, No Touch |
| Standard Functions | Record Query, Auto Status, |
| | T9 Input, 14 Digit User ID |

Power & Environment

| | |
|-----------------------|-------------------|
| Battery | Yes (Optional) |
| Operating Temperature | 0°C ~ 50°C |
| Power | 12V DC / 2A |
| Dimension (L*H*W) | 175 x 120 x 95 mm |



Auto Focus



Low Light Verification



Long Distance Verification



Accepts Color Finger

Software

Desktop, Web, Cloud



Time Attendance



Access Control



Employee Self Service



Mobile App

Disclaimer : Brief specifications are mentioned here. specification may change without prior notice. Customers are advised to check with us before purchase. Actual product may differ slightly to that depicted for ongoing product development.

Certified by    

www.biomaxsecurity.com

Connect with us on



BiomaxOfficial



BioMax Security



biomaxsecurity



BioMax Access Control